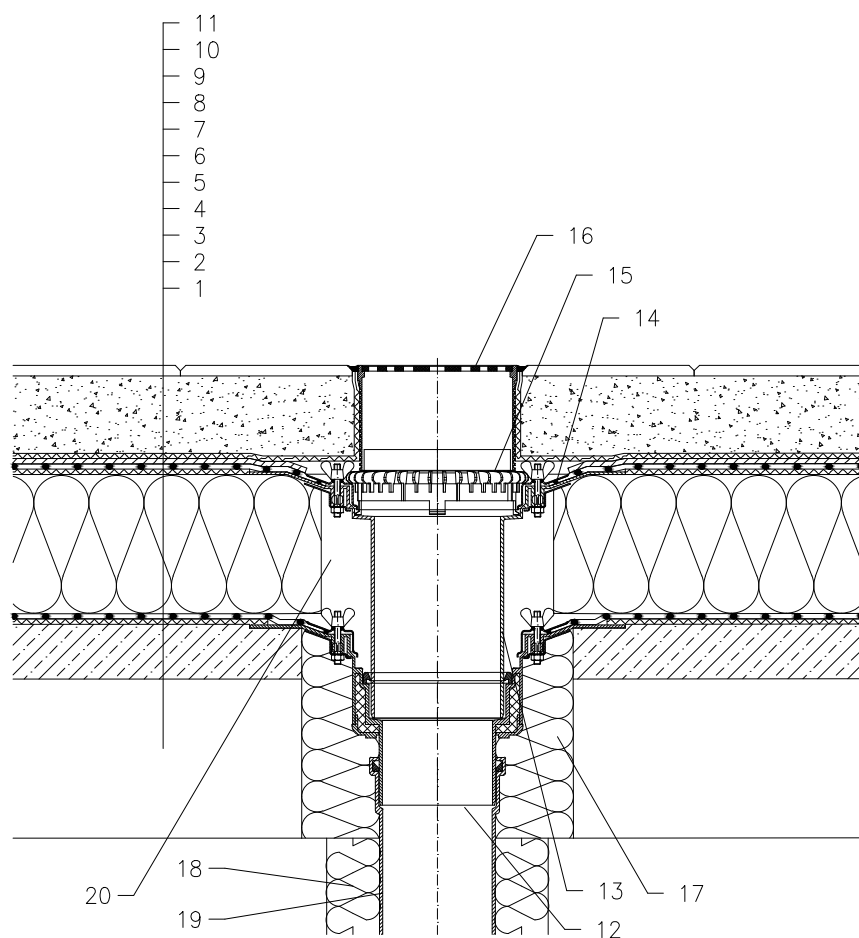


WARM ROOF – WALKABLE, CLASSICAL STRUCTURE, PLASTIC FOIL WATERPROOFING PAVEMENT IN SAND SUBBASE



- 1 SUPPORT CONSTRUCTION
- 2 GRAVITY LAYER
- 3 DILATATION LAYER
- 4 MOISTURE STOP AND TEMPORARY SAFETY WATERPROOFING FROM PLASTIC FOIL
- 5 THERMAL INSULATION
- 6 DILATATION LAYER
- 7 PLASTIC FOIL WATERPROOFING LAID LOOSE
- 8 DRAINAGE LAYER
- 9 FILTER LAYER
- 10 SAND SUBBASE
- 11 PAVEMENT
- 12 FLAT-ROOF DRAIN HL62B WITH INSULATED DRAIN BODY, FLANGE AND STAINLESS STEEL CLAMPING RING
(FOR PVC SHEETINGS FLAT -ROOF DRAIN HL62P;
FOR FPO SHEETINGS BASED ON PP FLAT -ROOF DRAIN HL62F)
- 13 EXTENSION HL65 WITH FLANGE, STAINLESS STEEL CLAMPING RING AND LIP SEAL
(FOR PVC SHEETINGS FLAT -EXTENSION HL65P;
FOR FPO SHEETINGS BASED ON PP FLAT -EXTENSION HL65F)
- 14 SEALING PACKING (SEE DETAIL-ACCESSORIES)
- 15 GRAVEL GUARD HL160
- 16 GRATING HL66.9 WITH STAINLESS STEEL GRATE 150x150 mm CHARGEABLE TO 300 kg (INCL. WITH HL62B)
- 17 ASSEMBLY FOAM
- 18 DOWNPIPE THERMAL INSULATION
- 19 DOWNPIPE
- 20 FILL FREE SPACE WITH MINERAL WOOL

NOTE:

FLAT-ROOF DRAIN HL62.1B (FOR PVC SHEETINGS FLAT -ROOF DRAIN HL62.1BP;
FOR FPO SHEETINGS BASED ON PP FLAT -ROOF DRAIN HL62.1BF)
HEATED (230V, 10-30 WATTS) CAN BE USED.
ASSEMBLY INLET: $\varnothing 255$ mm, OR 255 x 380 mm